



## PORT SECURITY ADVICE FOR THE GENERAL PUBLIC:

# Port of Karumba

## Background

In the event of a *heightened* or *exceptional* security level being declared at the Port of Karumba, additional security measures will be put in place on both the land and sea around the port.

Boat skippers operating in the port area will need to be mindful to always observe restricted areas on the water.

## Security Levels

The following three security levels have been adopted by the government and maritime industry across Australia.

- **Level 1 (Normal):** the level for which minimum appropriate protective security measures will be maintained in the Port of Karumba.
- **Level 2 (Heightened):** the level for which appropriate additional protective security measures will be maintained, for a period of time, as a result of the heightened risk of a security incident.
- **Level 3 (Exceptional):** the level for which further specific protective security measures will be maintained, for a limited period of time, when a security incident is probable or imminent, although it may not be possible to identify the specific target.

It is expected that Level 2 and 3 would be rare, short-term events. The Federal Government will notify ports when the security level has been raised, based on intelligence advice.

## Public Access Water-side

**If the port is put on a heightened security (Security Levels 2 and 3), a water-side restricted zone, which extends 60 metres from the face and ends of the wharves into the Norman River alongside the Zinifex, Karumba Livestock Loading (KLL) and Gulf Freight Services (GFS) facilities, will come into force.** The zone for KLL applies only when a cattle ship is at the berth at Level 2 and 3 Security (not under normal conditions). The zone at Zinifex and GFS applies at all times while at Security Level 2 and 3. The map below shows the water-side restricted zone.



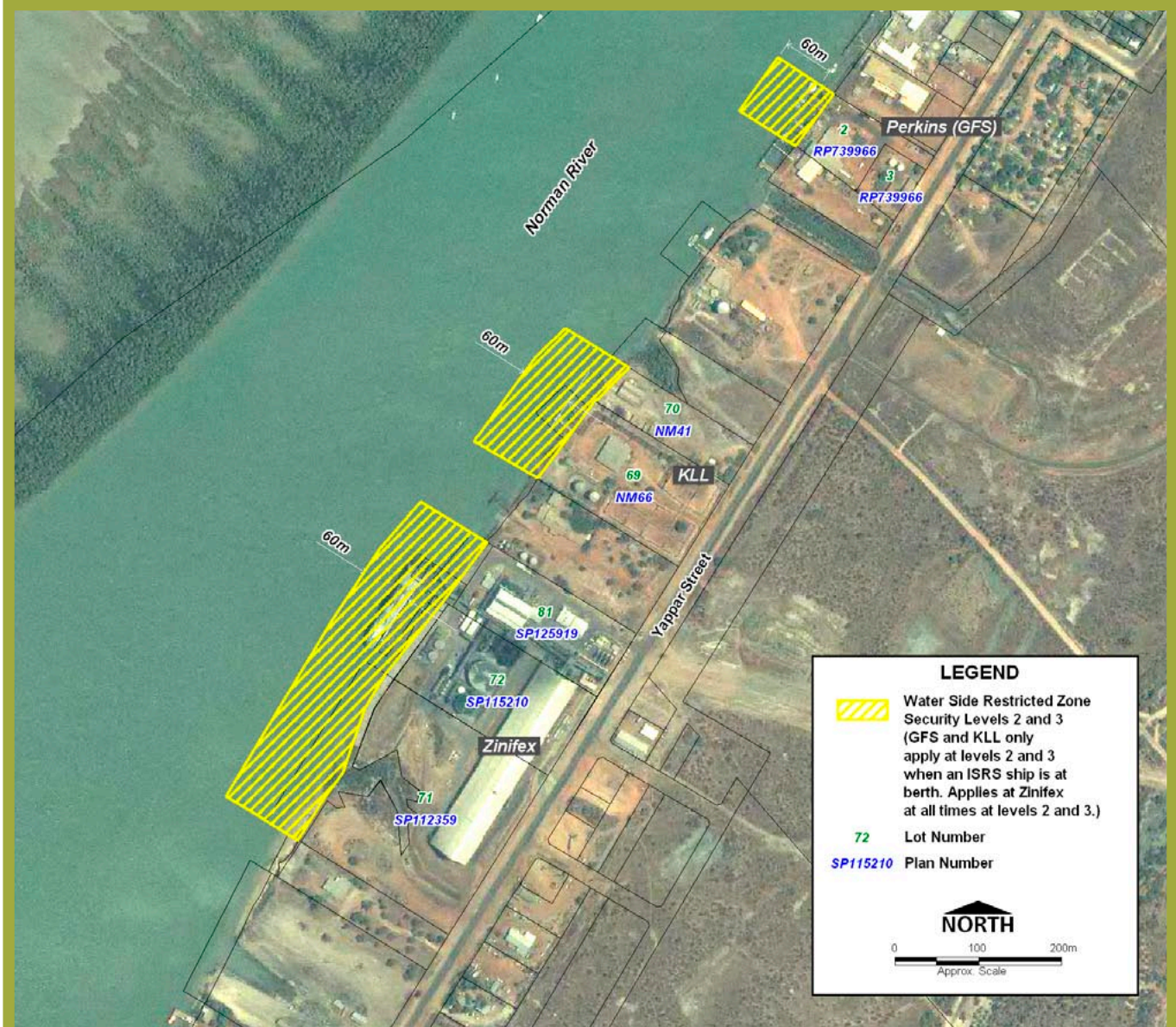
Entry of any unauthorised vessel (which includes fishing and recreational vessels) into this water-side restricted zone when it is in force is a serious offence. Signs will be erected on the shore advising when the heightened security level applies and when the zones are in force.

## Breaching Port Security Zones

Breaches of port security zones would jeopardise the security and operation of the port and anyone caught breaching the restricted zones faces heavy fines. Fines up to \$5,000 for individuals can apply.



Printed on recycled paper.



**Port of Karumba – Water-side Restricted Zone**

### Community Support Of Port Security

Apart from observing the access restrictions, the general public and boat owners are asked to be on the lookout for any suspicious behaviour in the port that may indicate a security threat. This should be reported to PCQ or the appropriate port facility operator. Your co-operation would be much valued.

These security measures have been implemented Australia-wide and PCQ and the port facility operators ask for your understanding and assistance in meeting our security obligations.

### FOR INFORMATION PLEASE CONTACT:

**Port Security Officer** on (07) 4745 9522 or  
**Port Security Supervisor** on (07) 4943 6479



Ports Corporation of Queensland Limited ACN 126 302 994  
 Level 24, 300 Queen Street  
 Brisbane Queensland  
 GPO Box 409, Brisbane QLD 4001  
 Phone 07 3224 7088  
 Facsimile 07 3224 7234  
 info@pcq.com.au  
 www.pcq.com.au